
ISOFT GXF Exporter

for Adobe Premiere

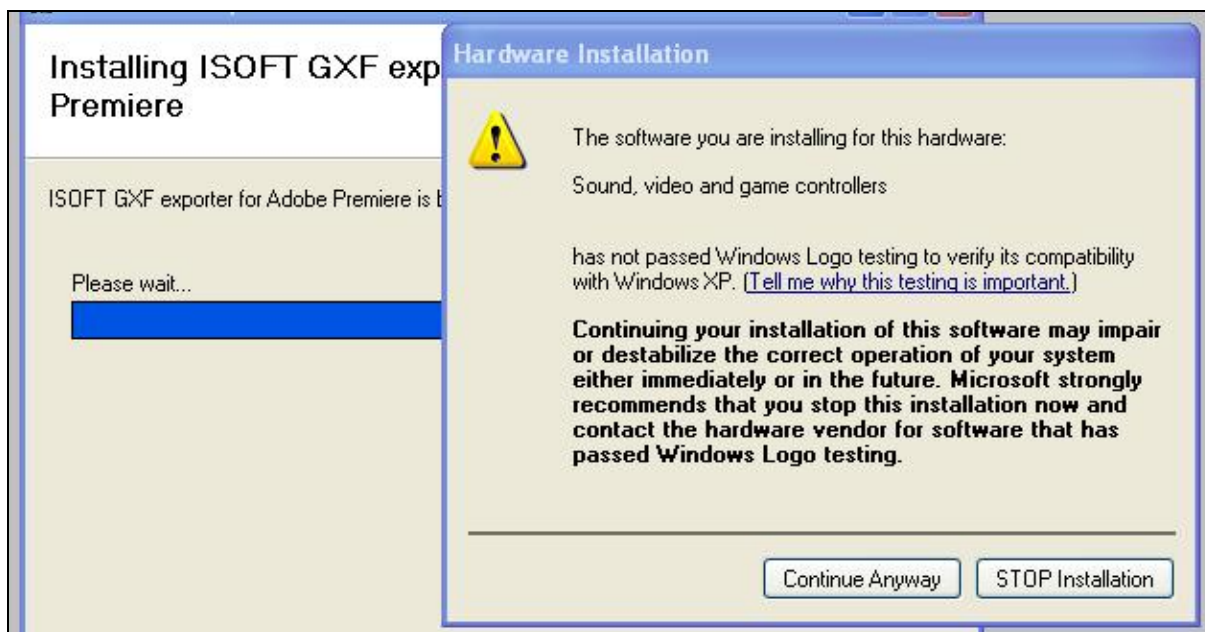
QUICK START GUIDE

Index:

Installing ISOFT GXF Exporter plug-in:	3
Configuration of Servers and License settings:.....	4
Server Settings:	5
License Settings:	7
Exporting a Sequence:	8
Troubleshooting:	10

Installing ISOFT GXF Exporter plug-in:

1. Go to the directory that holds the setup and run setup.
2. Follow the remainder of the on-screen instructions to finish installing ISOFT GXF exporter plugin for Adobe Premiere Pro.
3. First read the License Agreement then click I Agree radiobox button.
4. Click Next button to start the installation.
5. When a dialog with “Hardware Installation” title appears you **must** select continue anyway, this will install Panasonic DV25 codec.

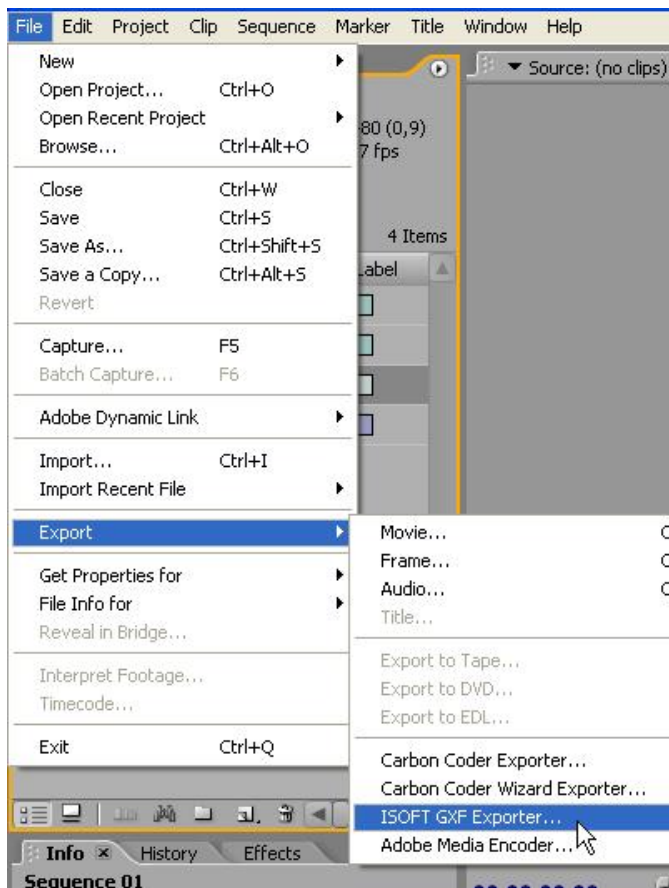


6. Wait until installation is complete then close setup with close button.

Note: You also **must** install ISOFT License Service.

Configuration of Servers and License settings:

To open plug-in settings you should first select a sequence then select file >> export >> ISOFT GXF Exporter... from the menu.

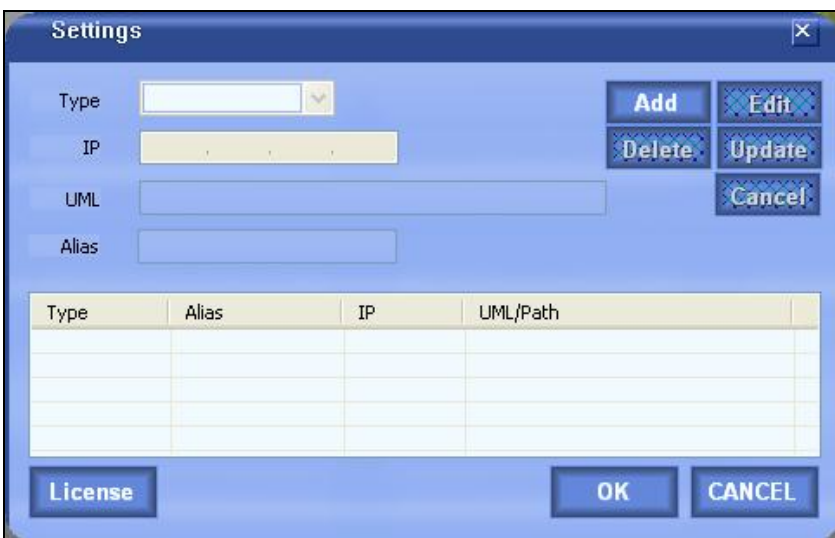


When you do this ISOFT GXF Exporter plug-in should appear.

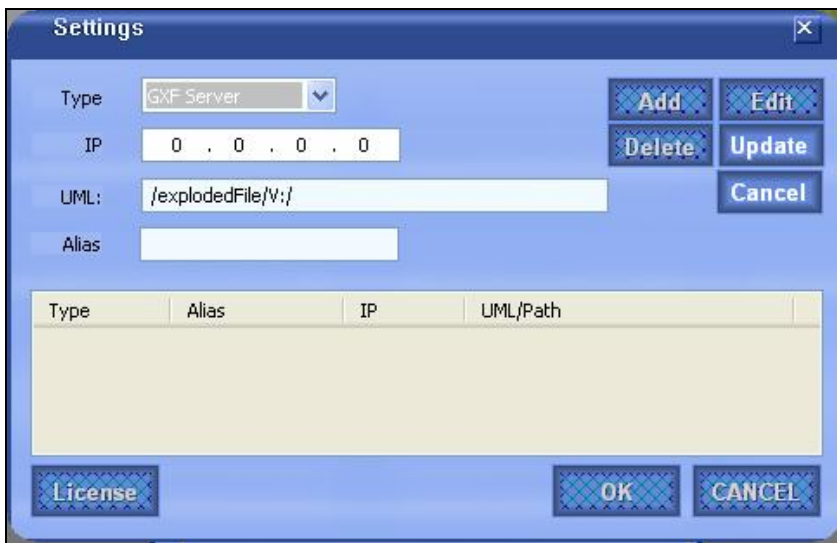


Server Settings:

You should click “Settings” button on the top left to open settings menu and enter the servers and ISOFT GXF exporter License.



You can add servers with using “Add” button; later you can edit or delete can from servers list with “Delete” and “Edit” buttons. When you press “Add” button plug-in will want you to enter server information.



Type: This setting should be “GXF Server” if you want to export your project directly into a video server like M-Series or Turbo. Otherwise you can export GXF to a local disk drive with selecting “File Server”.

IP: You should enter the IP address of your video server or ftp server.

UML: Enter “/explodedFile/V:” for GXF Server type or the directory name you wish to save GXF file on your disk drive if you selected File Server type.

Alias: You can enter an alias that should represent the server to you. After you set your server settings you should click “Update” button to it to list or “Cancel” button to cancel operation.

License Settings:

Click “License” button to open License menu.



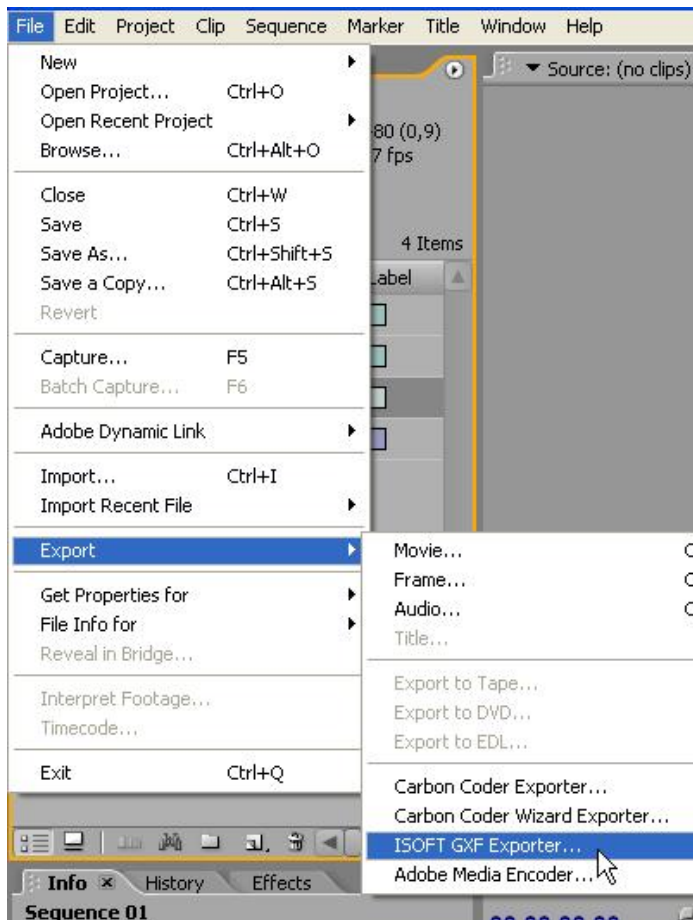
Enter license key that is appropriate to your “UNIQUE ID” and press “TRY” button. If the license key is true, a green “License is OK.” Information bubble will appear on top. If license key is false “License is invalid!” will appear.



If you don't have a license you can work with demo version which puts random ISOFT commercial frames inside every few second in GXF file. To use demo version press “DEMO” button.

Exporting a Sequence:

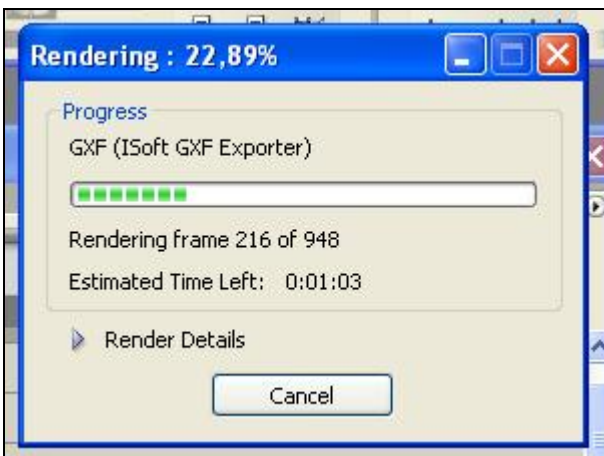
After you set your servers and license settings, you can export GXF files to defined GXF or File Servers. You **must** select your sequence, then you should select file >> export >> GXF >> ISOFT GXF Exporter... from the menu.



Select the server you want to export your sequence, enter the bin you want to put clip inside server and clip name.



After you fill the “Bin Name” and “Clip Name” Fields and selecting your server, you can press “Export” button to start exporting progress.



Server can play the clip while transfer is continuing after 5 seconds passed from start of transfer.

Troubleshooting:

If you encounter a problem while installing or using SMART Arrive, don't hesitate to contact our [support](#).